



Aerotech[®]

Dust Free Nesting and Routing

wirutex
hi-tech tools

Dust free Nesting and Routing

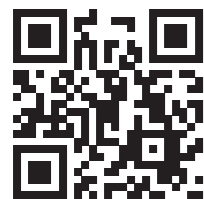


What it is and what it does

Aerotech® is an innovative system combining a **high-precision chuck** and an **extraction turbine** in one single product.

A revolutionary idea that **facilitates the removal of MDF and chipboard dust** chips during nesting and routing operations.

Aerotech® captures the **dust and chips**, channeling them towards the machine suction system.



Watch the film-clip of machining operations carried out with Aerotech®.

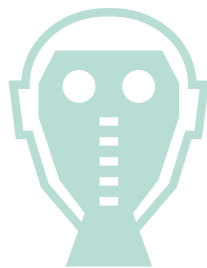
Dust free:
a winning operation.

- **IMPROVED** health
- **GREATER** energy savings
- **MORE** productivity
- **MORE** useful life for the tools
- **LESS** maintenance

Dust free: a winning operation

improved HEALTH

Protects operators from the risk of inhaling the dust and potentially toxic materials, improving the quality of the air in the workplace. Reduces the health risks, in accordance with work regulations.



greater ENERGY SAVINGS

Works with the minimum energy waste and notably reduces the use of compressed air. This means considerable overall energy savings.



more PRODUCTIVITY

Reduces the times needed for maintenance and repairs, and machine downtime. **Less time needed for cleaning means more time for producing.**



more USEFUL LIFE FOR THE TOOLS

Removes the overheated machining chips, at the same time cooling both the tool and the material machined. In practice, it guarantees **a longer working life for the tool, higher feed speed, and less risk of breakage.**



less MAINTENANCE

Prevents the dust from jeopardising the correct operation of the CNC and reduces the maintenance required. **Lower maintenance costs, lower assistance costs, higher financial savings.**



Versions

There are various Aerotech® models, designed to meet the differing needs of each company:



Aerotech® System E

With HSK shank, recommended for machining operations requiring a **high level of precision and for very high production quantities.**



Aerotech® Hydro

The hydraulic system for cylinder-shank tools guarantees quality and safety for **high production quantities.**



Aerotech® UniT

With precision collets for quick, easy tool changes. Ideal for **standard production quantities.**



The Faceplate

All the **Aerotech®** models are available in **Plus** versions with an integrated Faceplate grille.

The **Faceplate** is a grille that prevents the machining chips from entering and jamming the Aerotech®.

It can't be used with profiled tools.

Aerotech® System E

Aerotech® System E guarantees excellent axial and radial accuracy, thanks to the use of specific tools with an integrated HSK20E cone.

This characteristic makes the tools lighter, faster and more robust compared with the traditional ones, and also reduces the risk of mounting errors by the operator.

TECHNICAL CHARACTERISTICS

Aerotech® diameter
95 mm - 105 mm

Clamping system
HSK20E

Tool interface
HSK20E cone

Machine interface
HSK63F



Accessories



Adapter for sharpening



HSK63F chuck for router bits with HSK20E cone



Tool assembly and disassembly kit

Wirutex recommends

Aerotech® System E with Ø95 is ideal for the nesting world, whereas **Aerotech® System E** with Ø105 is recommended for traditional routing (even when integrated with edgebanding).

For machining CABINETS with chipboard panels, Wirutex recommends using the Faceplate grille.

SHARPENING ACCESSORY: request the adapter, so you can have your router bits with HSK20E shank sharpened at your local service centre!



Aerotech® Hydro

Aerotech® Hydro combines optimum suction power with a hydraulic tool clamping system that's easy to use.

Ideal for machining operations that call for top quality at high speeds, Aerotech® Hydro is compatible with all straight shank tools with a maximum diameter of 25 mm.

TECHNICAL CHARACTERISTICS

Aerotech® diameter
95 mm - 105 mm

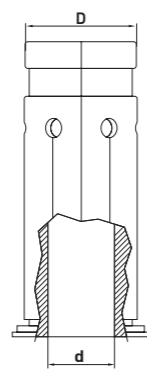
Clamping system
Hydraulic (with reduction sleeves)

Tool interface
Cylindrical shank

Machine interface
HSK63F - ISO30



Accessories



Reduction sleeve

Wirutex recommends

Aerotech® Hydro 95 is ideal for the nesting world, whereas **Aerotech® Hydro 105** is recommended for traditional routing (even when integrated with edgebanding).

For machining CABINETS with chipboard panels, Wirutex recommends using the Faceplate grille.



Aerotech® UniT

Aerotech® UniT is the version with a mechanical clamping system using precision collets that ensure a quick, easy tool change. Aerotech® UniT comes with Ø 105 only, and is recommended for standard production cycles.

It can only be used with straight cutting tools.

TECHNICAL CHARACTERISTICS

Aerotech® diameter
105 mm

Clamping system
Mechanical (with collets)

Tool interface
Cylindrical shank

Machine interface
HSK63F



Accessories



Precision collet



Locking device (necessary)



Torque wrench (recommended)

Wirutex recommends

For Nesting operations, the Plus version (with integrated Faceplate grille) is recommended.

An Aerotech® for every machining operation

	NESTING CABINET with straight tools			NESTING MDF with profiled tools		ROUTING	
	SYSTEM E	HYDRO	UniT	SYSTEM E	HYDRO	HYDRO	UniT
CLAMPING SYSTEM	HSK20E	Hydraulic (with reduction sleeves)	Mechanical (with collets)	HSK20E	Hydraulic (with reduction sleeves)	Hydraulic (with reduction sleeves)	Mechanical (with collets)
TOOL INTERFACE	HSK20E cone	Cylindrical shank	Cylindrical shank	HSK20E cone	Cylindrical shank	Cylindrical shank	Cylindrical shank
PERFORMANCE	★★★★	★★★★	★★★☆☆	★★★★	★★★☆☆	★★★★	★★★☆☆
PRODUCTIVITY	★★★★	★★★★	★★★☆☆	★★★★	★★★★	★★★★	★★★☆☆
AEROTECH DIAMETER (mm)	95	95	105	105	105	105	105
FLANGE TYPE	Faceplate	Faceplate	Faceplate	Standard	Standard	Standard	Standard
MACHINE INTERFACE	HSK63F	HSK63F ISO30	HSK63F	HSK63F	HSK63F	HSK63F	HSK63F
TOOL DIAMETER (mm)	Max 25.5	Max 25.5	Max 16.0	Max 72.5	Max 72.5	Max 72.5	Max 16.0

Did you know...

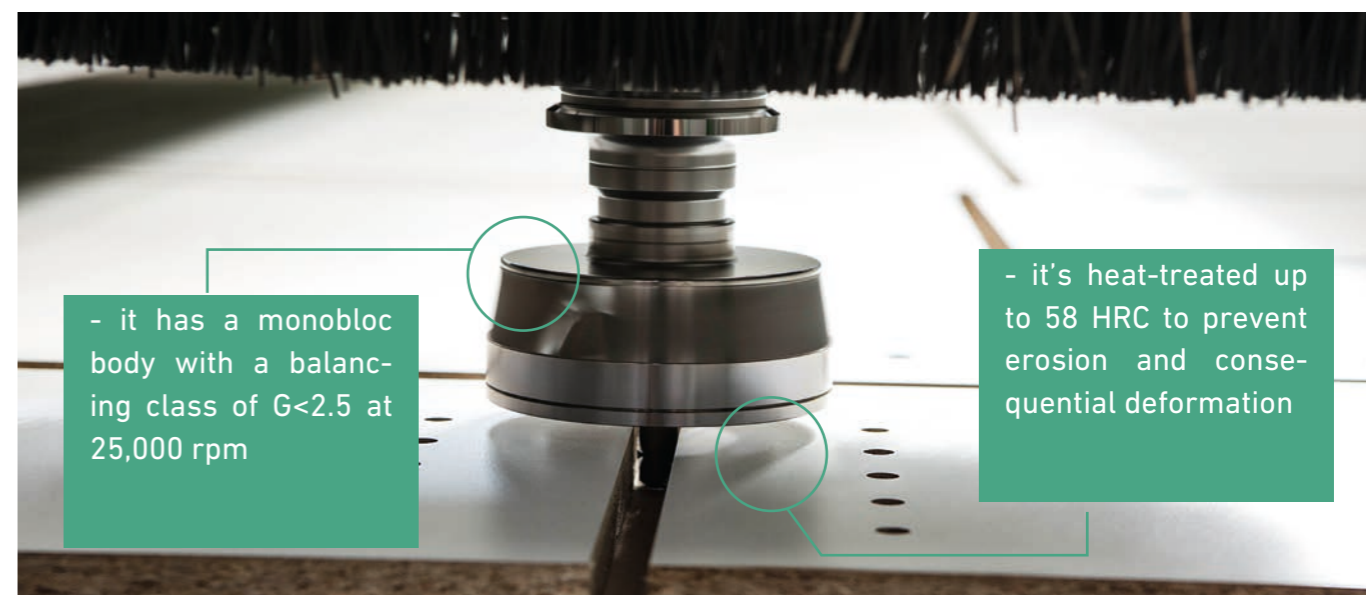
Aerotech®, used with a Ø14mm router bit on an MDF with a thickness of 18mm, on 3 work shifts (220 production days) - **removes 8.4 tonnes of dust, avoiding the use of compressed air and vacuum cleaners.**

Ministries of the Environment all over the world have underlined that **formaldehyde emissions from MDF constitute one of the main risks for workers' health** in the woodworking industry.

Machining dust can **cause breathing difficulties and other serious health problems**, some of which may only appear many years later.

For this reason, it is recommended that operators be exposed to the lowest possible quantities of dust.

Aerotech® costs more because:



Certified technology

In terms of safety and efficiency, **Aerotech®** has been tested and certified by the leading institutes and universities of Europe.



Wirutex s.r.l.

www.wirutex.com

Via Mario Ricci, 28
61122 Pesaro (PU) - **Italy**

Tel. +39 (0) 721 204355
Fax +39 (0) 721 204359
info@wirutex.com



- Wirutex high-tech tools



- Wirutex s.r.l.



- Wirutex high-tech tools